



BARD1

LIFE SCIENCES LIMITED

Transforming early cancer detection & prevention

HONG KONG BIOTECH INVEST | March 2017

Forward Statements

This presentation has been prepared by BARD1 Life Sciences Limited (“BARD1” or the “Company”) based on information available to it as at the date of this presentation. The information in this presentation is provided in summary form and does not contain all information necessary to make an investment decision.

This presentation does not constitute an offer, invitation, solicitation or recommendation with respect to the purchase or sale of any security in BARD1, nor does it constitute financial product advice or take into account any individual’s investment objectives, taxation situation, financial situation or needs. An investor must not act on the basis of any matter contained in this presentation but must make its own assessment of BARD1 and conduct its own investigations. Before making an investment decision, investors should consider the appropriateness of the information having regard to their own objectives, financial situation and needs, and seek legal, taxation and financial advice appropriate to their jurisdiction and circumstances. BARD1 is not licensed to provide financial product advice in respect of its securities or any other financial products. Cooling off rights do not apply to the acquisition of BARD1 securities.

Although reasonable care has been taken to ensure that the facts stated in this presentation are accurate and that the opinions expressed are fair and reasonable, no representation or warranty, express or implied, is made as to the fairness, accuracy, completeness or correctness of the information, opinions and conclusions contained in this presentation. To the maximum extent permitted by law, none of BARD1 its officers, directors, employees and agents, nor any other person, accepts any responsibility and liability for the content of this presentation including, without limitation, any liability arising from fault or negligence, for any loss arising from the use of or reliance on any of the information contained in this presentation or otherwise arising in connection with it.

The information presented in this presentation is subject to change without notice and BARD1 does not have any responsibility or obligation to inform you of any matter arising or coming to their notice, after the date of this presentation, which may affect any matter referred to in this presentation.

The distribution of this presentation may be restricted by law and you should observe any such restrictions.

This presentation contains certain forward looking statements that are based on the Company’s management beliefs, assumptions and expectations and on information currently available to management. Such forward looking statements involve known and unknown risks, uncertainties, and other factors which may cause the actual results or performance of BARD1 to be materially different from the results or performance expressed or implied by such forward looking statements. Such forward looking statements are based on numerous assumptions regarding the Company’s present and future business strategies and the political and economic environment in which BARD1 will operate in the future, which are subject to change without notice. Past performance is not necessarily a guide to future performance and no representation or warranty is made as to the likelihood of achievement or reasonableness of any forward looking statements or other forecast. To the full extent permitted by law, BARD1 and its directors, officers, employees, advisers, agents and intermediaries disclaim any obligation or undertaking to release any updates or revisions to information to reflect any change in any of the information contained in this presentation (including, but not limited to, any assumptions or expectations set out in the presentation).

BARD1 Life Sciences (ASX:BD1)

- **Diagnostics company** focused on developing non-invasive diagnostics for early detection of cancer
- **Three products** with a market opportunity >\$10B
- **Proprietary BARD1 Technology** platform with patents extending beyond 2031
- **High value pipeline** of diagnostics and therapeutics for multiple cancers
- **Completed studies** demonstrating BARD1 panels are highly sensitive and specific for detection of lung, ovarian & other cancers

BARD1
Lung

- Early detection of lung cancer
- Industry leading performance
- USD \$20B +

BARD1
Ovarian

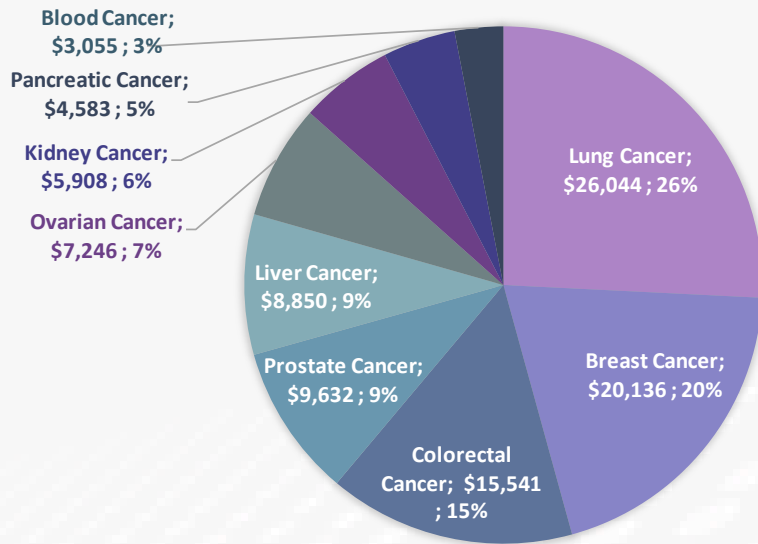
- Early detection of ovarian cancer
- Unmet clinical need
- USD \$7B +

BARD1
Vaccine

- Targeted and specific therapy for Bard1 positive cancers
- USD \$3B +

Transforming early cancer detection and prevention

Large Market Opportunities



Global Cancer Diagnostics Market (USD million)

Application	2013	% share
Lung Cancer	\$ 26,044	25.8%
Ovarian Cancer	\$ 7,246	7.2%
GLOBAL MARKET	\$ 100,994	100.0%

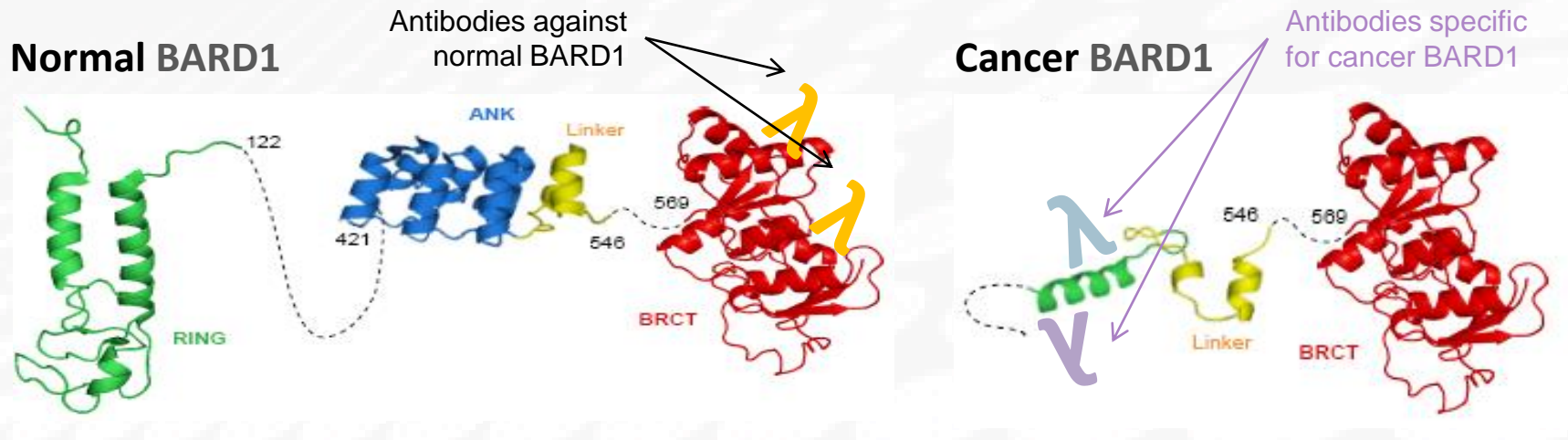
Source: Transparency Market Research 2014

- **Global cancer diagnostics market** valued at US\$101B in 2013 & forecast to reach \$169B by 2020¹
 - Unmet clinical need for non-invasive, accurate & affordable diagnostic tests for early detection of cancer
- **Global cancer vaccines market** was valued at US\$3.5B in 2016²
 - Unmet clinical need for safer, more effective & targeted solutions for prevention or treatment of cancer

Proprietary BARD1 Technology

The BARD1 protein interacts with *tumor suppressor genes* (eg *BRCA1*) and *proto-oncogenes*, often forming heterodimers which are involved in cell growth regulation, DNA damage repair, ubiquitination and transcriptional regulation

Normal cells express only the full BARD1 isoform, while many Cancer cells express *cancer-type specific* splice variant isoforms



The human body produces antibodies against these BARD1 variant isoforms, which are potential diagnostic biomarkers for *early detection* and therapeutic targets for immunotherapy

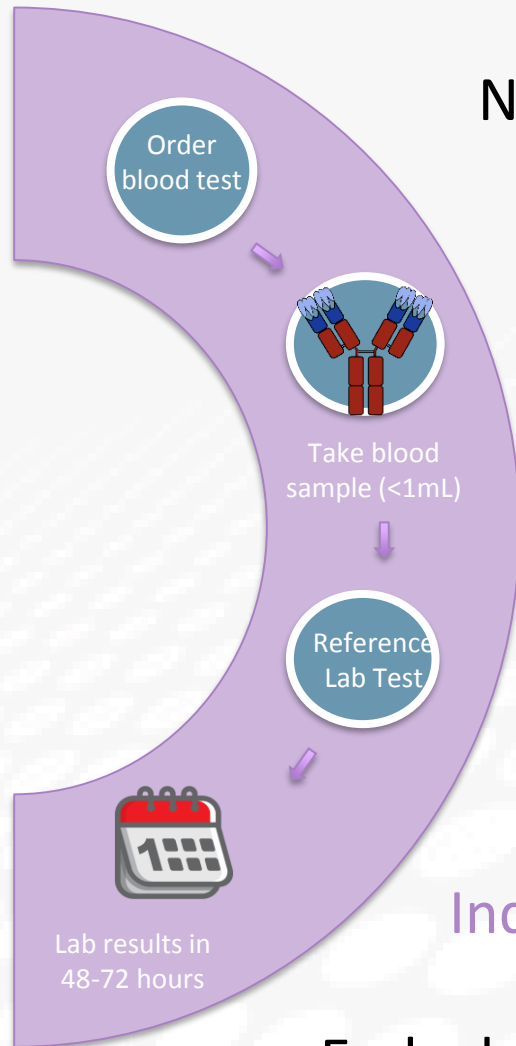
Intellectual Property Portfolio

- 5 patent families covering various BARD1 DNA & protein sequences, methods of diagnosis & treatment, and use in multiple cancers

Patent Family	Title	Status		Expiry
		Granted	Pending	
PCT/FR01/02731	Truncated BARD1 protein and its diagnostic and therapeutic uses	US, JP		2023*
PCT/IB2011/053635	BARD1 isoforms in lung and colorectal cancer and use thereof	JP, CN	US (allowed), JP, CN (divisionals), EP, CA, IL, AU, BR, SG	2031*
PCT/IB2011/054194	Kits for detecting breast or ovarian cancer in a body fluid sample and use thereof		US, EP	2032*
PCT/EP2014/073834	Lung Cancer Diagnosis		US, EP, CA, JP, IL, CN, AU, SG, KR	2034*
EP14002398.7	Novel non-coding RNA, cancer target and compounds for cancer treatment		US	2035*

*Plus any extension of term in the US due to prosecution delay

BARD1 Diagnostics



Non-invasive ELISA-based blood tests

Fast, Convenient & Affordable

Cost-effective & potentially reimbursable

Testing performed from standard specimen collection tubes by reference laboratory





Provides clinically relevant and actionable information



Industry Leading Sensitivity and Specificity

Early detection saves lives!

Development Pipeline

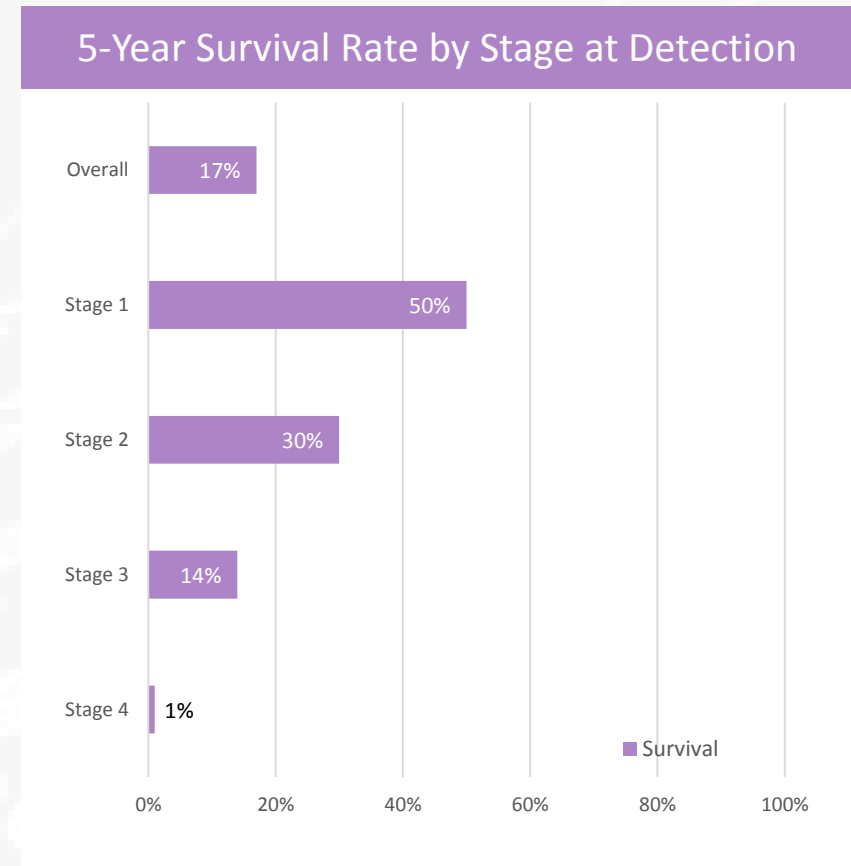
- Building portfolio of BARD1 Tests for screening, diagnosis & monitoring of cancer to help save people's lives
- Lead product is BARD1 Lung Cancer Test for early detection of lung cancer
- Pipeline of cancer diagnostics and therapeutics targeting unmet needs in multiple cancers

DIAGNOSTICS	PRODUCT	INDICATION	PLATFORM	USE	RESEARCH	ASSAY DEVELOPMENT	CLINICAL VALIDATION	MARKETABLE / APPROVAL	MARKET SIZE (USD)
		Lung Cancer	ELISA (Blood)	Screening & Diagnosis			2017		\$26B
	Ovarian Cancer	ELISA (Blood)	Detection & Monitoring			2018		\$7.2B	

THERAPEUTICS	PRODUCT	INDICATION	RESEARCH	PRE-CLINICAL	PHASE I	PHASE II	PHASE III	APPROVAL	MARKET SIZE (USD)
		Cancer							

Lung Cancer | Unmet need for early detection

- Lung Cancer is the most common cancer & leading cause of cancer death worldwide
 - Incidence: 1.82m new cases pa
 - Mortality: 1.59m deaths pa
- Current diagnosis: chest x-ray, CT scan & biopsy
 - Limited use as inaccurate, expensive, invasive or radiation risk
 - No blood test approved for screening lung cancer
- 5-year survival is linked to stage at detection
 - **Poor overall 5-year survival:** 17.4% in US & 5.8% worldwide
 - **Late-detection is deadly:** majority of patients diagnosed at late-stage with <14% survival
 - **Early-detection saves lives:** >50% survival if diagnosed early

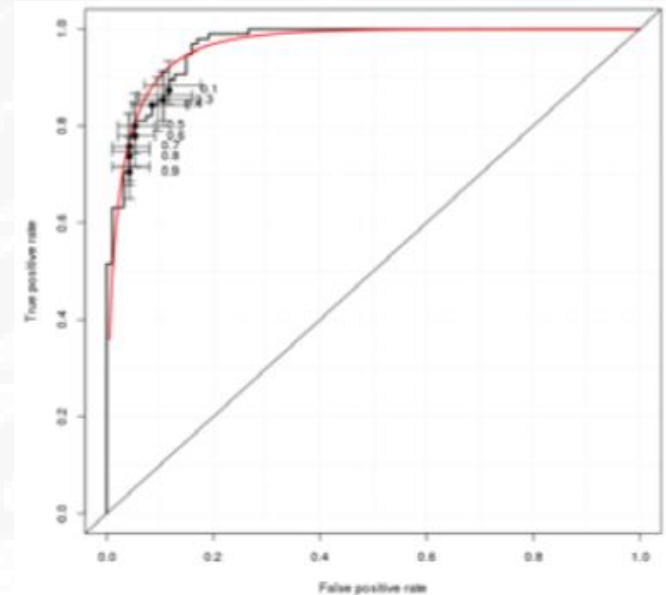


Source: <https://www.cancer.org/cancer/non-small-cell-lung-cancer/detection-diagnosis-staging/survival-rates.html>

BARD1 Lung Cancer Test for early detection

- BARD1 Lung Cancer Test is an ELISA-based blood test for screening and diagnosis of lung cancer
- BARD1 LC is accurate, sensitive and specific for detection of lung cancer
- Clinical Validation planned to demonstrate performance of BARD1 LC Test
 - **Screening test** for early detection of lung cancer in high-risk asymptomatic individuals
 - **Diagnostic aid** for detection of lung cancer in symptomatic patients, or for risk assessment of a pulmonary nodule following a CT scan

ROC curve for BARD1 LC Test



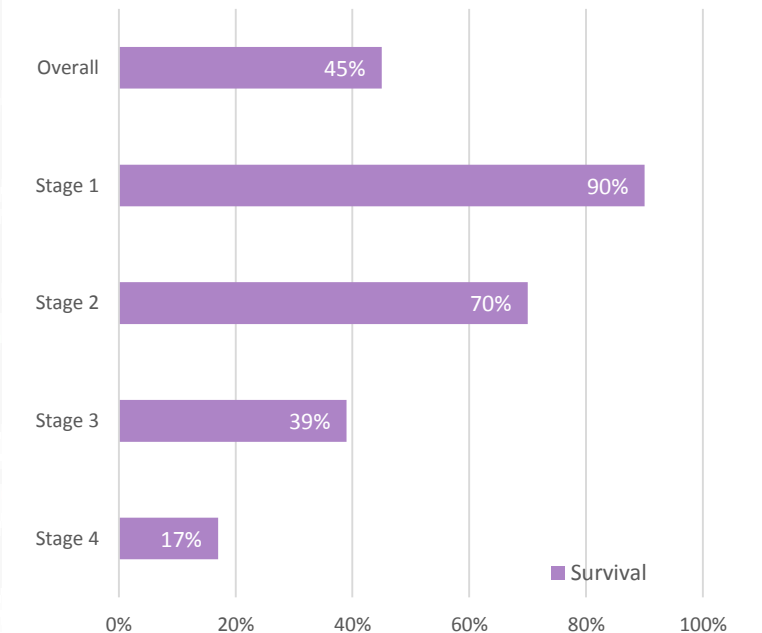
Study	n	AUC	Sensitivity	Specificity
Lung Cancer POC	200	>0.93	>90%	>90%

AUC is the accuracy of the test; Sensitivity is the % of people with cancer that correctly test positive; Specificity is the % people without cancer that correctly test negative.

Ovarian Cancer | Unmet need for early detection

- Ovarian Cancer is the 7th most common cancer in women worldwide
 - Incidence: 239K new cases pa
 - Mortality: 152K deaths pa
- Current diagnosis: pelvic exam + TVUS → CA-125 or ROMA blood tests (used off-label) → CT/MRI/PET imaging for pelvic mass → biopsy
 - Limited use as inaccurate, expensive or invasive
 - No blood test approved for screening ovarian cancer due to high false positives, only for risk-assessment in women with pelvic masses
- 5-year survival is linked to stage at detection
 - **Low overall 5-year survival:** 45% in US & 30% worldwide
 - **Late-detection is deadly:** 60% diagnosed at late-stage with <39% survival
 - **Early-detection saves lives:** 90% survival if diagnosed early

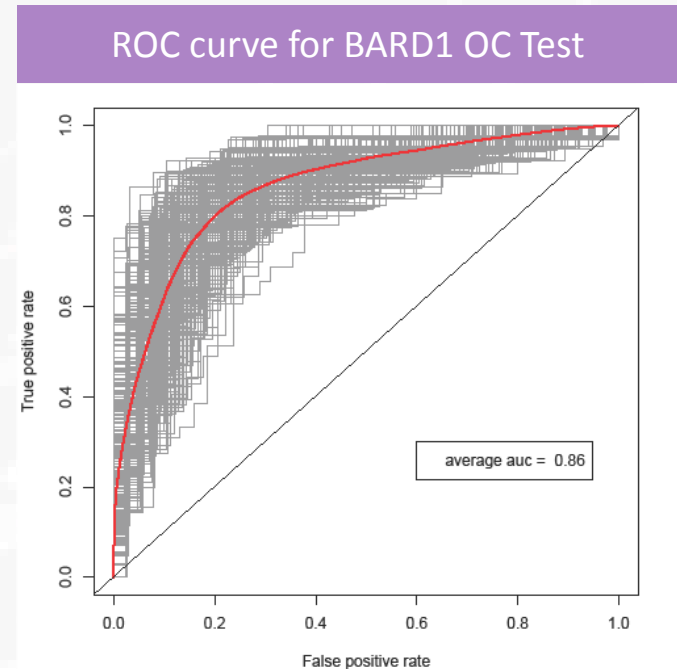
5-Year Survival Rate by Stage at Detection



Source: www.cancer.org/cancer/ovarian-cancer/detection-diagnosis-staging/survival-rates.html

BARD1 Ovarian Cancer Test for early detection

- BARD1 Ovarian Cancer Test is an ELISA-based blood test in development for detection and monitoring of ovarian cancer
- POC studies demonstrated BARD1 OC Test is accurate, sensitive and specific for detection of ovarian cancer
- Assay Development underway to further develop, optimise and validate the test for early detection of ovarian cancer



Study	n	AUC	Sensitivity	Specificity
Ovarian Cancer POC	116	>0.86	>85%	>85%

AUC is the accuracy of the test; Sensitivity is the % of people with cancer that correctly test positive; Specificity is the % people without cancer that correctly test negative.

Leadership Team



Peter Gunzburg BCom | Chairman

- Public company director, stockbroker & technology investor, with 20+ years corporate advisory, capital raising, transaction & business management experience
- Currently Chair of the Institute for Respiratory Health at UWA
- Previously Director of Resolute Ltd, Australian Stock Exchange Ltd, Eyres Reed Ltd, CIBC World Markets Australia Ltd, Fleetwood Corporation Ltd, Dragon Mining Ltd and Newzulu Ltd



Dr Leearne Hinch BSc BVMS MBA | Chief Executive Officer

- Biotechnology executive and consultant with extensive leadership, strategy, fundraising, operational, business development and commercial experience
- Founder and director of Ingeneus Solutions Pty Ltd delivering commercialisation advice across drugs, devices, diagnostics & animal health
- Previously CEO Eustralis Pharmaceuticals Ltd, CEO Immuron Ltd, COO OBJ Ltd, GM Holista CollTech Ltd, and CCO Chemeq Ltd



Dr Irmgard Irminger-Finger PD PhD | Executive Director & Chief Scientific Officer

- Founder and co-inventor of BARD1 and its technology, European Woman Entrepreneur Award finalist (2014), and internationally recognised expert in tumour biology with over 100 publications, and multiple international collaborations and keynote conference presentations
- Currently Privat Docent at UNIGE heading the Molecular Gynaecology and Obstetrics Laboratory at HUG, and Adjunct Prof at UWA
- Former Executive Director & founder of BARD1AG SA



Brett Montgomery | Non-Executive Director

- Extensive experience in public company management, leadership, corporate governance and risk management
- Currently Non-Executive Director of Tanami Gold NL, and Magnum Gas and Power Ltd
- Previously Managing Director Kalimantan Gold NL, and Director of Grants Patch Mining Ltd and EZA Corporation Ltd



Prof Geoff Laurent PhD FRCP(Hon) FRCPATH FMedSci | Non-Executive Director

- Accomplished organisational leader, thought-leader, scientific editor, advisory board member, and award winning respiratory scientist with over 300 peer reviewed publications
- Currently Director of the Institute for Respiratory Health, and Director of the Centre of Cell Therapy and Regenerative Medicine at UWA
- Former Vice-Dean of Enterprise & Head of Department of Internal Medicine at University College London, Past President British Association for Lung Research

Company Snapshot

CORPORATE INFORMATION	
Listed	20 June 2016
Industry	Biotechnology
Products	Cancer diagnostics
Headquarters	Perth, Australia
Ticker	ASX:BD1
Ordinary Shares	552m
Market Cap (@17/3/17)	A\$17.11m
Share Price (@17/3/17)	A\$0.031
52w H/L Range	A\$0.046-0.019
Cash (@ 31/12/16)	A\$1.93m

SHAREHOLDERS	# SHARES	% HOLDING
Irmgard Irminger	108,252,420	19.61%
Tony Walker	88,501,626	16.03%
Peter Lynton Gunzburg	29,835,004	5.40%
Universite de Geneve	12,500,000	2.26%
Vendor/UNIGE Shares*	229,503,791	41.58%
Top 20 Holders	351,009,506	63.59%

*Escrowed until Jul-18



Peer Valuations

- BD1 has significant upside potential as it progresses its development-stage diagnostics through validation towards commercialisation



Source: Yahoo Finance (15/3/17)

Achievements & Anticipated Newsflow

Date (CY)	Events
2Q16	✓ Raised A\$3 million and listed on ASX:BD1
3Q16	✓ Commenced development of BARD1 Lung Cancer Test for early detection of Lung Cancer
	✓ Positive results from Ovarian Cancer POC study
1H17	✓ Results of Assay Feasibility Study for BARD1 Test on MSD instrument platform
	○ Results of Ovarian Cancer studies in 300 samples
	○ Results of Lung Cancer studies in 450 samples
	○ Collaboration to evaluate Cancer Immunotherapy in animal models
	○ Publication of Lung Cancer POC Study results in international peer-reviewed journal
2H17	○ Appoint Advisory Board
	○ Publication of Ovarian Cancer POC Study results
	○ Commence Validation of BARD1 Lung Cancer Test
2018	○ Results of first Clinical Validation study of BARD1 Lung Cancer Test
	○ Commence Validation of BARD1 Ovarian Cancer Test

Investment Highlights

Commercially Compelling

- Non-invasive cancer diagnostics targeting unmet needs in US\$101B global market

Proven Science

- Multiple publications validating BARD1 variants as novel diagnostic markers and therapeutic targets for multiple cancers

POC Completed

- BARD1 biomarkers demonstrated as highly sensitive and specific for detection of cancer

Commenced Validation

- BARD1 Tests undergoing further development to optimise and clinically validate the tests for early detection of lung and ovarian cancers

Diagnostic Advantages

- Non-invasive blood tests for early detection of cancer to improve patient outcomes, save lives & reduce healthcare costs

Future Pipeline

- Additional high-value diagnostic and therapeutic applications under evaluation

Solid IP

- Broad patents covering technology, products and uses extending beyond 2031

Experienced Leadership

- Scientific, biomarker translation and commercial expertise committed to delivering cancer detection and prevention solutions to save patients' lives

Strong Newsflow

- Multiple milestone announcements & valuation inflection points over next 12-18 months

BARD1



Contact details

BARD1 Life Sciences Ltd

Ground, Tempo Building, 431 Roberts Rd
Subiaco WA 6008 Australia

P +61 8 9381 9550 | **E** info@bard1.com | **W** www.bard1.com

Dr Leearne Hinch

CEO

E leearne@bard1.com

M +61 400 414 416

Operational Highlights

BARD1
Lung

- Results pending for 500 subject study demonstrating performance of BARD1 Lung test
- Paper submitted for publication on POC Study

BARD1
Ovarian

- Results pending for 300 subject study demonstrating performance of BARD1 Ovarian test

BARD1
Vaccine

- Discussions underway for Cancer Immunotherapy collaboration with Australian institution

Additional BARD1 Research

- Advance **diagnostic pipeline** for multiple cancers
 - Development of new **Diagnostic Tests** for other cancers
 - Research to evaluate **Liquid Biopsy** products for diagnosis and treatment monitoring of cancer
 - Partner to co-develop **Companion Diagnostics** for patient selection and monitoring of targeted cancer therapeutics
- Progress **therapeutic pipeline** for BARD1 positive cancers
 - Collaborate to evaluate the effectiveness of **Cancer Immunotherapy** for the treatment of cancer in animal models