



BIOACTIVE LABORATORIES

celebrate healthy living

**Disruptive
Anti-Microbial & Anti-Inflammatory
Plant-based Health Solutions**

AusBiotech Invest

Rick Ferdinands

Founder & Managing Director

24th October 2017

Agenda

1. Business Model Elements

2. Commercial Opportunities

- ✓ Listed Medicines
- ✓ Drug Discovery

3. Immediate Plans



Business Model – Elements 1

Platform Technologies

Drug Discovery

+

Listed Medicines

Immediate **patent** opportunities for:

Anti-parasitic pathogens
(Digestive & Blood-borne)

Digestive Inflammatory Disorders
(Oral to Anal Inflammatory)

Immediate **revenue** opportunities for:

Oral Hygiene
(Targeting Mouth Ulcers)

Skin Care
(Cosmetic to wound healing)



Khapre® DS: Digestive Stress Formula

Khapre® - DS is a digestive stress formula with anti-inflammatory action for health foods, weight-loss & multi-vitamin products.



Khapre® J Osteo: Joint Formula Range

Khapre® - J Osteo is a joint formula designed as an ingredient in natural anti-inflammatory and multi-vitamin products.



Khapre® S: Skin Formula Range

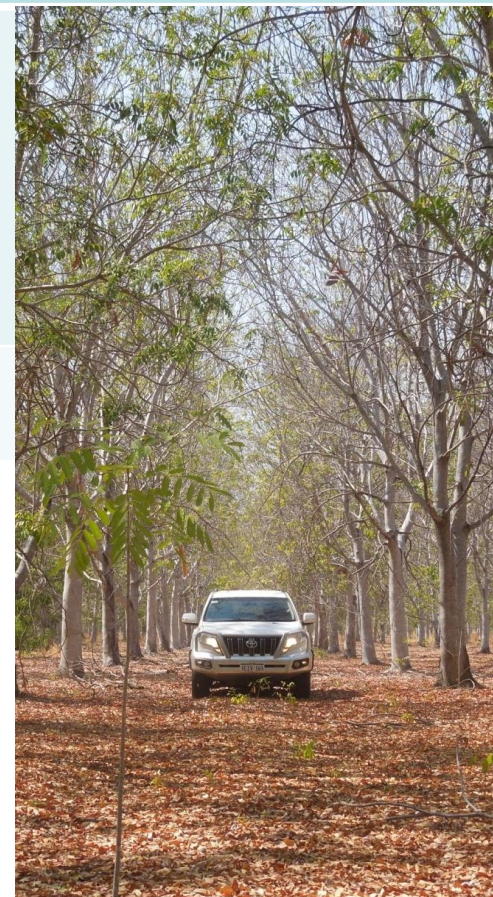
Khapre® - S is a skin formula range with high potency anti-oxidant & anti-inflammatory action for anti-aging & acne management.

Business Model – Elements 2

Significant Barriers to Entry

Regulatory + IP + Supply Chain Exclusivity

1. TGA approval (Listed Medicines)
2. Patented extracts (Listed Medicines)
3. Compound complexity – raw material exclusivity



Business Model – Elements 3

Experienced Team

IP/Regulatory + Commercial + Research Mngt



Rick Ferdinands
Founder & MD

Prof Anthony Carroll
Advisory – Drug Discovery



Wendy Free
Formulations & TGA

Dr Darren Schliebs
Advisory - Listed Medicines



Dr Sandy Chien
US Market & FDA

Paul Field
Advisory – Global Pharma



Business Model – Confirmation

Drug Discovery Collaborations

Prof Alan Cowman



Walter+Eliza Hall
Institute of Medical Research

Prof Phillip Vercoe

Faculty of Science
UWA School of Agriculture and Environment

Nobel Laureate, Prof Barry Marshall

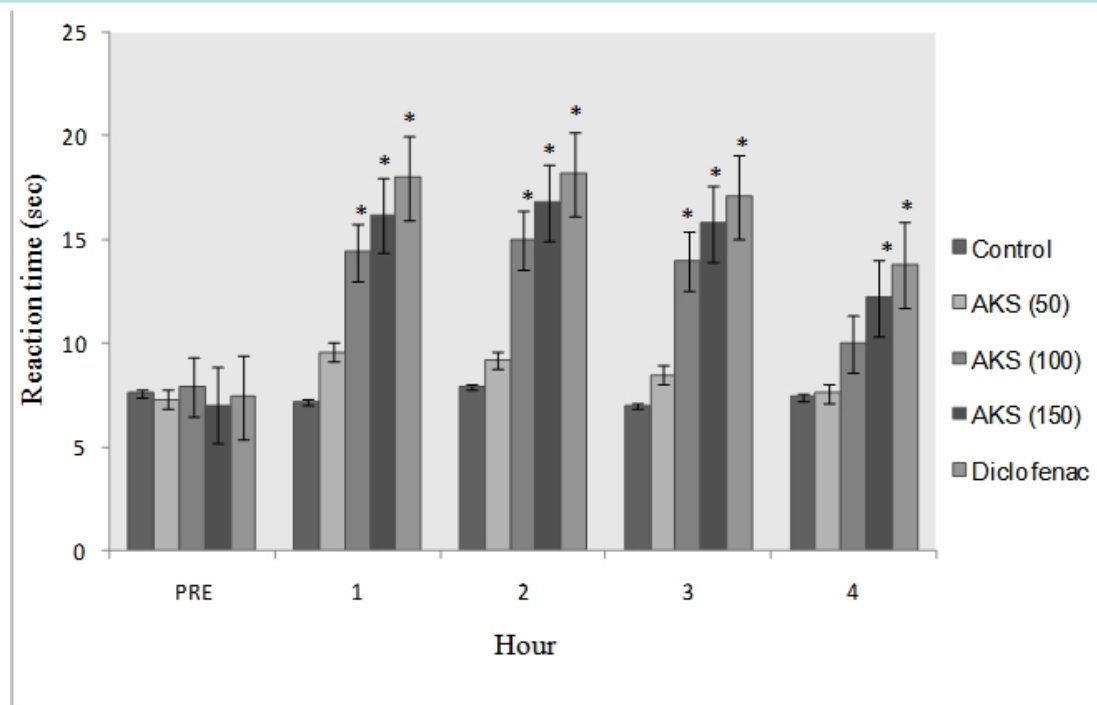


Prof Anthony Carroll



Anti-inflammatory – Scientific Evidence

Effectiveness comparison studies - Voltaren

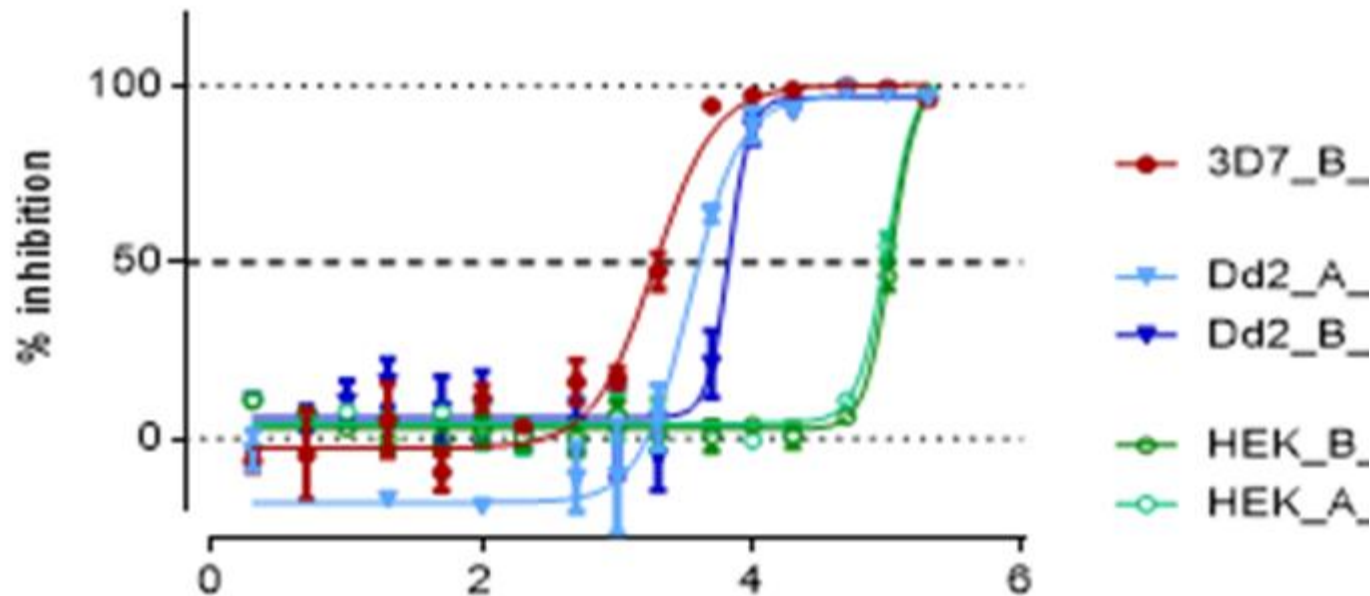


- Match bioavailability (absorption speed)
 - Match effective pain relief
- Gastro-intestinal repair characteristics
- ‘First in Class’ new anti-inflammatory

Anti-microbial – Scientific Evidence

Potent & Safe on Resistant Strains

JBH04-67-48-50



- Potent on key pathogens
 - Wide Safety margin
 - New Mode of Action

Commercial Opportunities

-- wholly owned subsidiaries --

Drug Discovery

+

Listed Medicines

Bioactive Therapeutics Pty Ltd

Compound Discovery & Patent
(2 areas of unmet need)

- Human parasite targets
- Grazing animal parasites

First Spin-off company

Aeris Pharmaceuticals Pty Ltd

Bioactive Natural Health Pty Ltd

Regulatory approval
(achieved)

Extracts commercialised in 2018
(relationships formed)

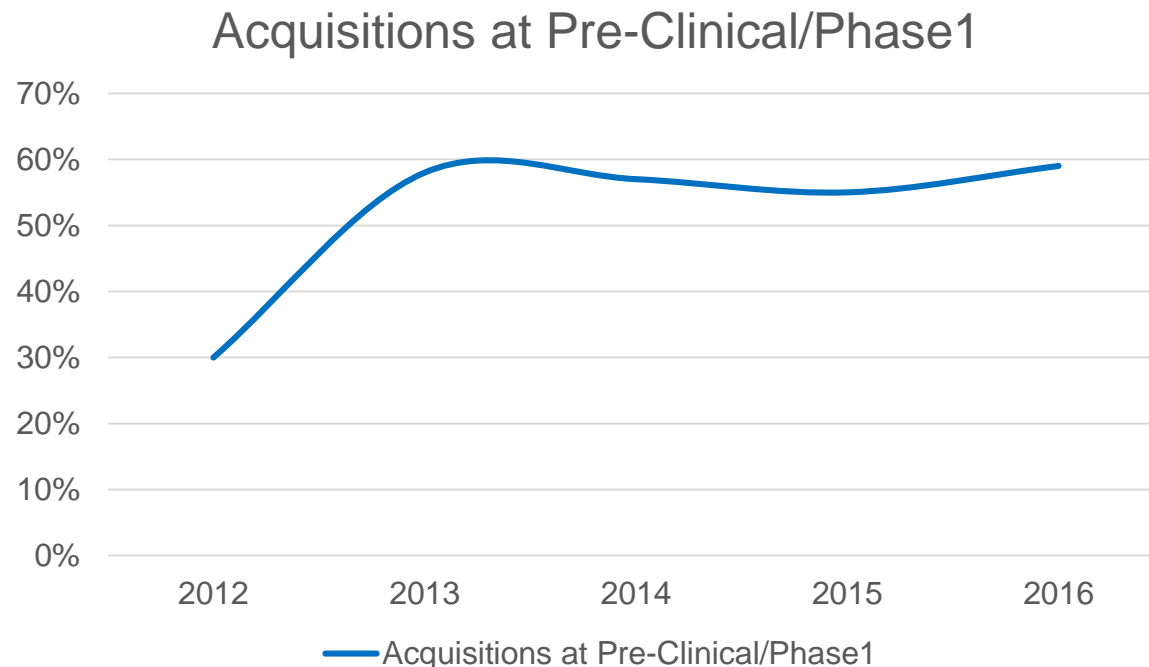
Listed Medicines – Sales Opportunities

Areas of un-met need in plant based medicines:

- : Mouth Ulcer / Oral Inflammation treatments
- : Anti-fungal treatments (fungal nail infections)

Drug Discovery - Acquisition Trends (USA)

- **VC investor deals doubled 2013-2016**
 - Deals closed from 60(2013) to 129(2016)
 - Median investment from \$15M(2013) to \$36M(2016)
- **Established early stage acquisition trend**



Drug Discovery - Acquisition Activity (USA)

- **Recent early stage exits:**

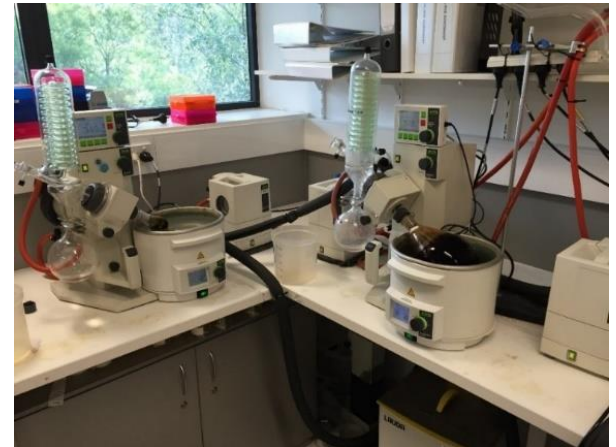
Company	Acquirer	Stage	Upfront	Total Consideration
CoStim 2014	Novartis	Pre-Clinical	\$95 million	\$445 million
iPierian 2014	BMS/Biogen	Pre-Clinical	\$175 million	\$725 million
True North 2017	Bioverativ	Phase 1b	\$460 million	\$885 million

- **Common elements:**

- Novel targets validated by Pre-Clinical data
- Extremely large market opportunities

Immediate Plans

- **Small capital raising to:**
 1. Secure Listed Medicines Business
 - Regulatory &
 - Market Partner(s)
 2. Firm-up Drug Discovery Parameters
 - Patent(s), Collaborations &
 - Pre-Clinical strategic planning
 3. Attract VC Partner(s)
 - US Focus
 - Capital & Market connections



Summary

- **Disruptive Biotech Model**
 - **Earlier & cheaper to market – Listed Medicines**
 - **World-class Drug Discovery Collaborators**



Walter+Eliza Hall
Institute of Medical Research



- **High Net Worth Investor ready**
 - **ESIC Compliant**
 - **Exit within 3 to 5 years**



BIOACTIVE LABORATORIES

celebrate healthy living

**Disruptive
Anti-Microbial & Anti-Inflammatory
Plant-based Health Solutions**

AusBiotech Invest

by

Rick Ferdinands

Founder & Managing Director

24th October 2017