

**Contact: Dr Brad Walsh**

**Mobile: +61 413 231 296**

**Suite 2, Ground Floor, 75 Talavera Rd Macquarie Park, NSW 2113**

**[www.glytherix.com](http://www.glytherix.com)**

\*A wholly owned subsidiary of Minomic International Ltd

# Forward Looking Statements

- This presentation was prepared primarily for the general information of potential investment/commercial partners. This presentation is not an offer or invitation to subscribe for or purchase securities.
- This presentation does not purport to summarize all information that an investor should consider when making an investment decision. None of GlyTherix Ltd (GlyTherix), Minomic International Ltd (Minomic) or their respective directors, employees or advisers warrant or represent the accuracy or completeness of the information contained in this presentation. Except for any statutory liability that cannot be excluded, GlyTherix, Minomic and their respective directors, employees and advisers disclaim all responsibility and liability for any loss or damage that may be incurred by any recipient relying on the information in the presentation whether that loss or damage is caused by any fault or negligence on the part of GlyTherix, Minomic or any of their directors, employees or advisers, or otherwise.
- To the extent that the presentation contains any forecasts, projections or other forward looking statements, those statements involve known and unknown risks, uncertainties and other facts that may cause actual results, performance or achievements to be materially different from those expressed or implied by those statements. There can be no guarantee that actual results, performance or achievements will be as stated.
- You represent and confirm by attending and/or by retaining this presentation, that you accept these conditions

# Investment Highlights

- **Huge Potential Market** – immuno-oncology US\$51Billion market
- **Strong IP position for Glypican-1** – demonstrated role in aggressiveness and spread
- **Multiple targets** – Glypican-1 known to be present in prostate, bladder, pancreatic, breast, ovarian, glioblastoma cancers as well as mesothelioma
- **Strong early licensing prospects** - good early engagement with a number of large pharma companies
- **Influential thought leadership** - Clinical Advisory Panel membership by world renowned clinicians and academics
- **Strong safety profile** - drug already administered to 10 human patients with no drug related adverse events and no off-target binding.

# The Opportunity

- Raise \$20M to fund commercialization of unique antibody (Miltuximab™) targeting cancers with a major underserved need in high value market
- Miltuximab™ is a **first-in-class treatment for certain solid tumors** that can address the growing US\$51B immuno-oncology market for cancer treatment
- Interim results from first-in-human clinical trials demonstrate promising cancer targeting and an excellent safety profile
- Commercialization of this exciting technology is enhanced by a strong propriety knowledge of the target, Glypican-1 – which is present in a number of different solid tumor types



# GlyTherix Ltd - Company Snapshot

<b>Company</b>	<ul style="list-style-type: none"><li>• GlyTherix Ltd</li><li>• Incorporated 2017; ACN: 621 291 996</li><li>• Unlisted public company</li><li>• Located in Sydney (Macquarie Park), Australia</li><li>• Web: <a href="http://www.GlyTherix.com">www.GlyTherix.com</a></li></ul>
<b>Shareholders and Capital</b>	<ul style="list-style-type: none"><li>• Currently a wholly owned subsidiary of Minomic International Ltd</li><li>• Issued shares 249,786,250</li><li>• Ownership of current issued capital to be distributed/transferred to current shareholders of Minomic International Ltd</li></ul>

# Pathway to Shareholder Returns

- GylTherix intends to commercialise Miltuximab<sup>®</sup>, either by licensing or trade sale to a large pharmaceutical or biotech company capable of taking Miltuximab<sup>®</sup> through regulatory approvals and into the global market
- GylTherix continues to engage with Key Opinion Leaders (KOLs) and potential licensees ensuring Miltuximab<sup>®</sup> development meets clinical, commercial and patient expectations
- Funding will enable GylTherix to make Miltuximab<sup>®</sup> “IND Ready” by completing pre-clinical studies designed to demonstrate the use of Miltuximab<sup>®</sup> with different mechanisms of action – recognizing pharma licensees will focus on different mechanisms of action
- GylTherix will produce sufficient clinical grade drug to commence US Phase 1 trial(s) - a compelling value proposition for potential licensees and partners



# Company Profile

- Minomic is a private immuno-oncology company founded in Sydney in 2007
- GlyTherix is currently a subsidiary of Minomic but will be spun out as a separate entity
- Both are based in the business park next to Macquarie University campus and adjacent to Macquarie University Hospital (Sydney, Australia)
- Partnerships with universities & research institutes (Uni Qld, Qld Uni Tech, Uni Technology Sydney, Weill Cornell, Uni Michigan)
- Recipient of Eureka Science Award in 2015 in collaboration with UTS and University of Adelaide



# Minomic Executive Management



**Dr Brad Walsh *CEO***

Brad founded Minomic to bring to market an innovative biomarker for prostate cancer. Under his leadership Minomic has generated a pipeline of new diagnostics and therapeutics in development for prostate, bladder and pancreatic cancer. Brad has a background in commercialization of products in diagnostics and proteomics and continues to be active in research collaborations. He was a joint recipient of the Eureka Prize for Interdisciplinary Research in 2015



**David Burdis *CFO / Company Secretary***

David is a qualified accountant and has worked in the chemical, telecommunications, and financial services industries. He has held various senior/board positions, for both listed and unlisted companies, in Australia, the UK and Hong Kong, including Swire Blanch Limited and OAMPS Limited.

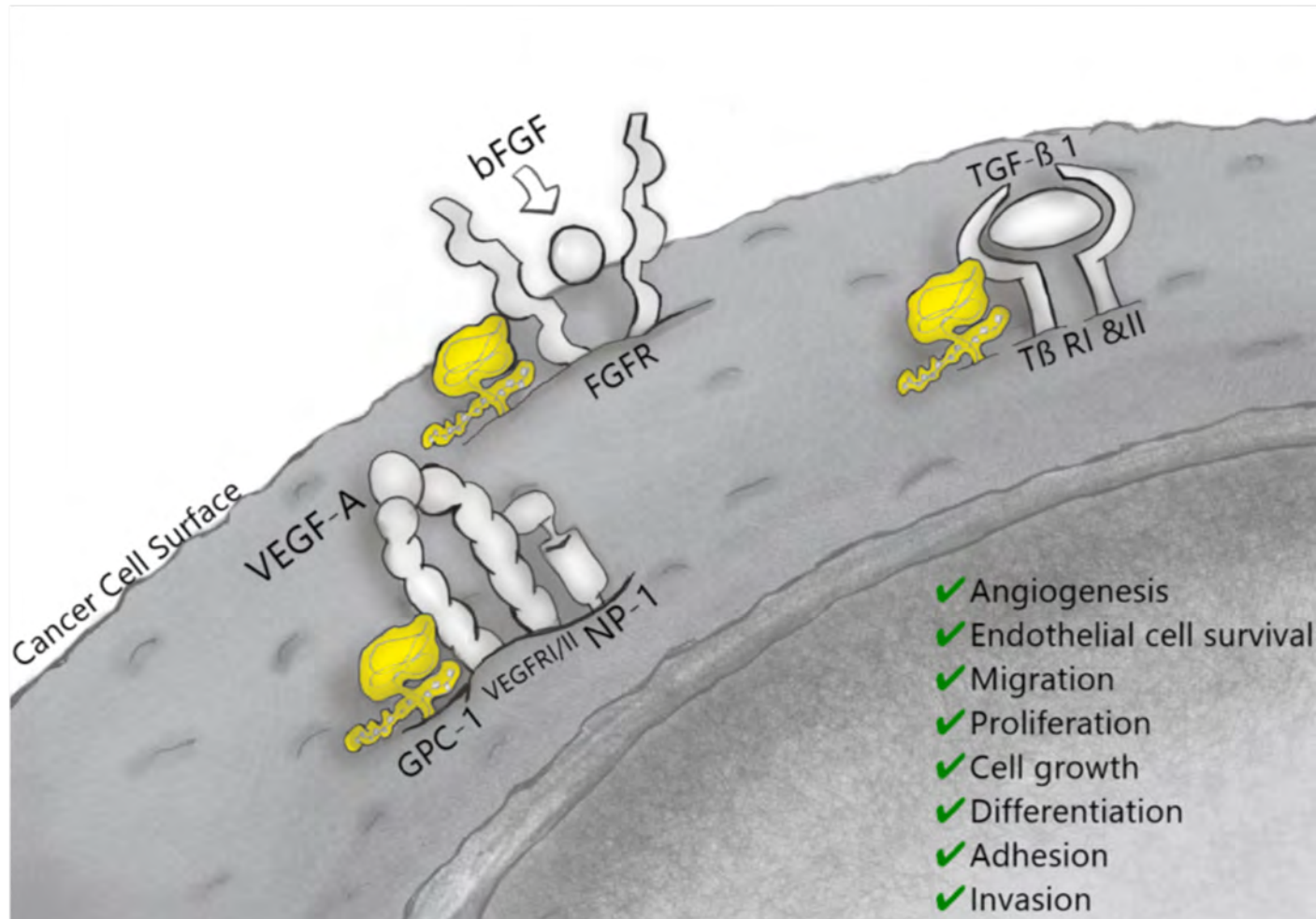


**Dr Douglas Campbell *Head of Research and Development***

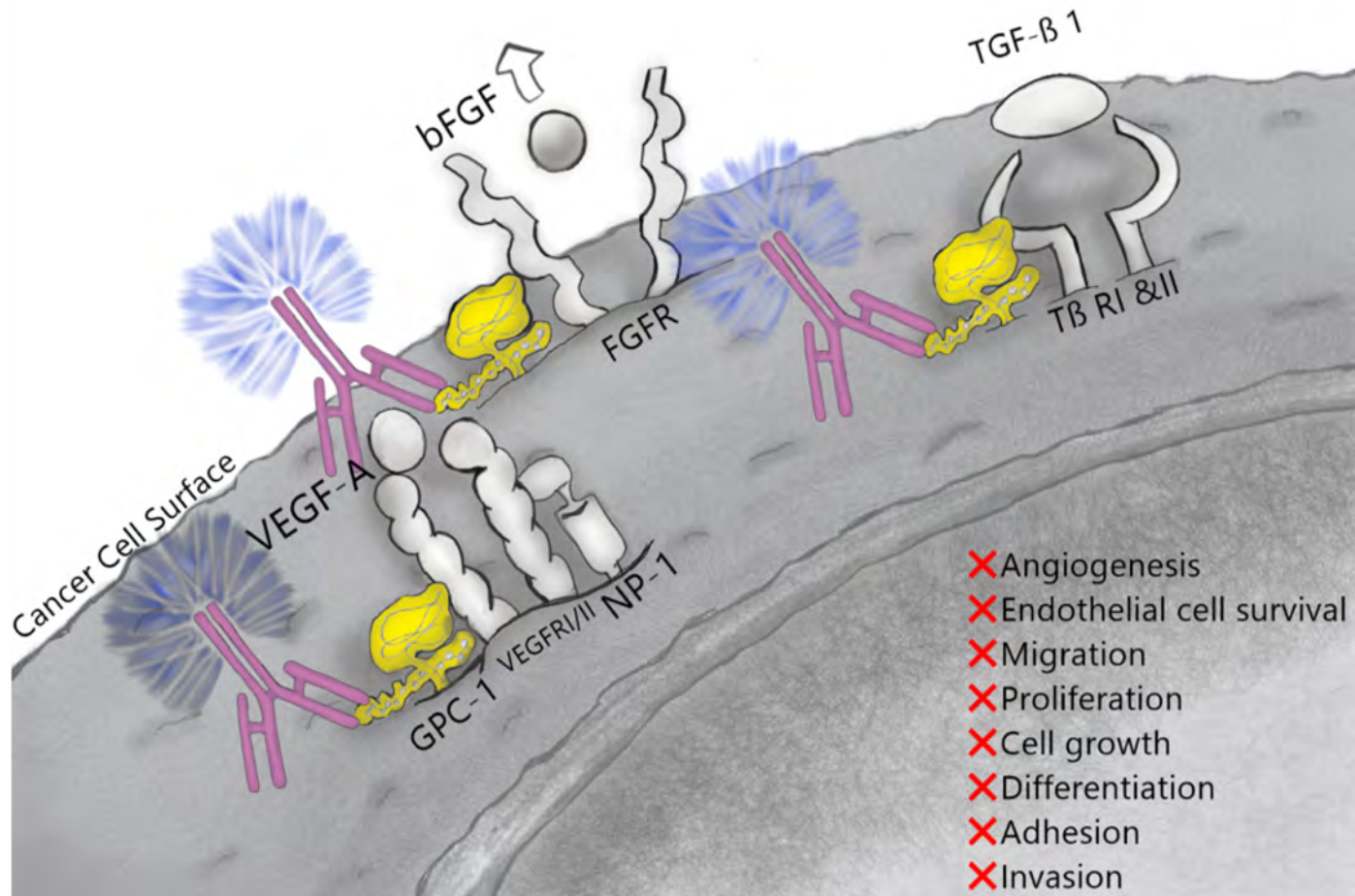
Douglas is the Head of Research and Development and leads Minomic's scientific team. He has nearly 20 years of experience in biomedical research with a particular focus on drug development and oncology. Most recently, he was involved in the development of a novel antibody (MDX-1097) from pre-clinical to Phase 2 clinical trials



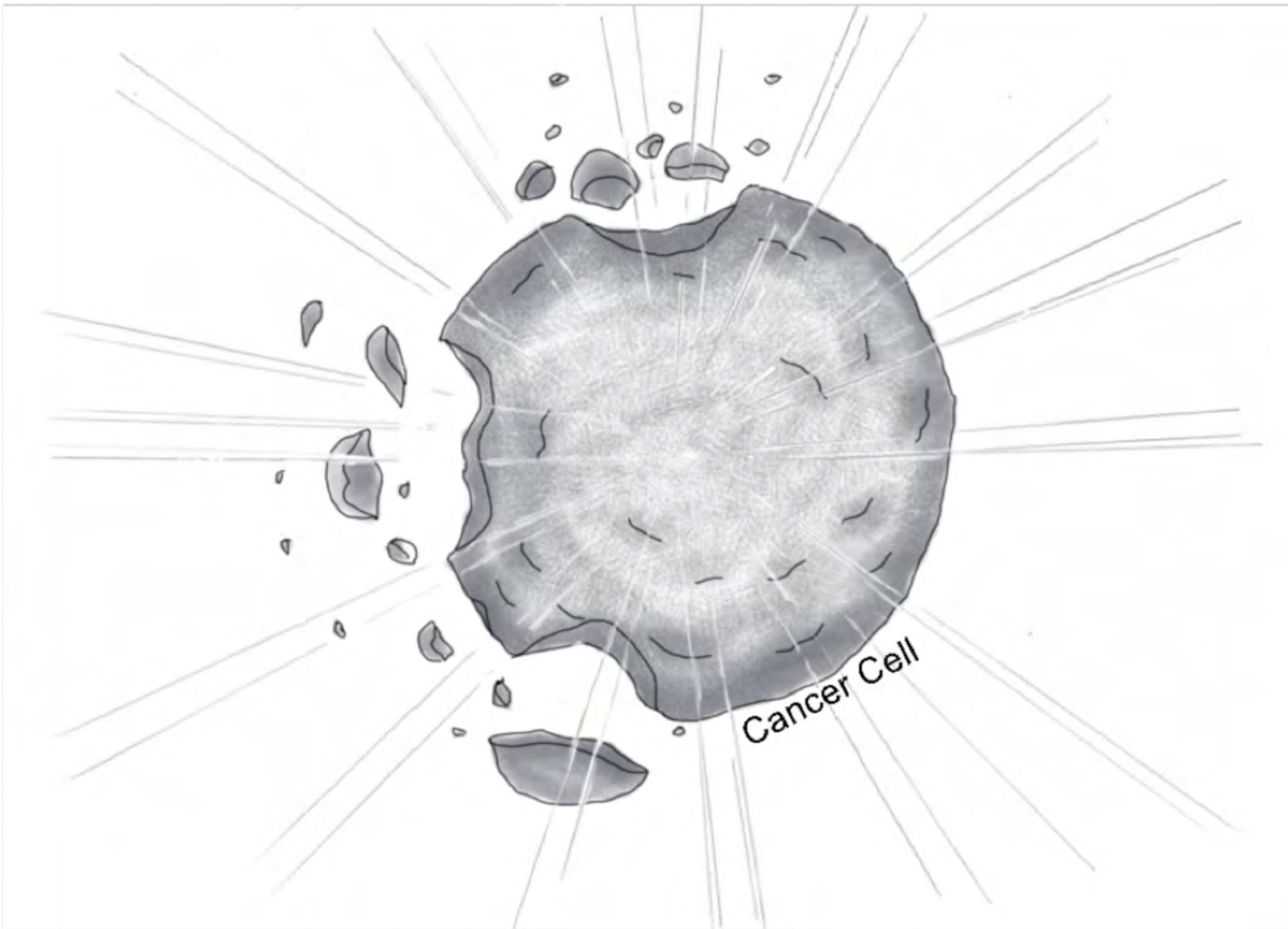
# The Target – Glypican-1



# The Target – Glypican-1

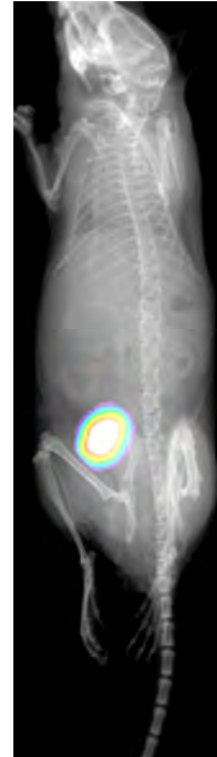


# The Target – Glypican-1

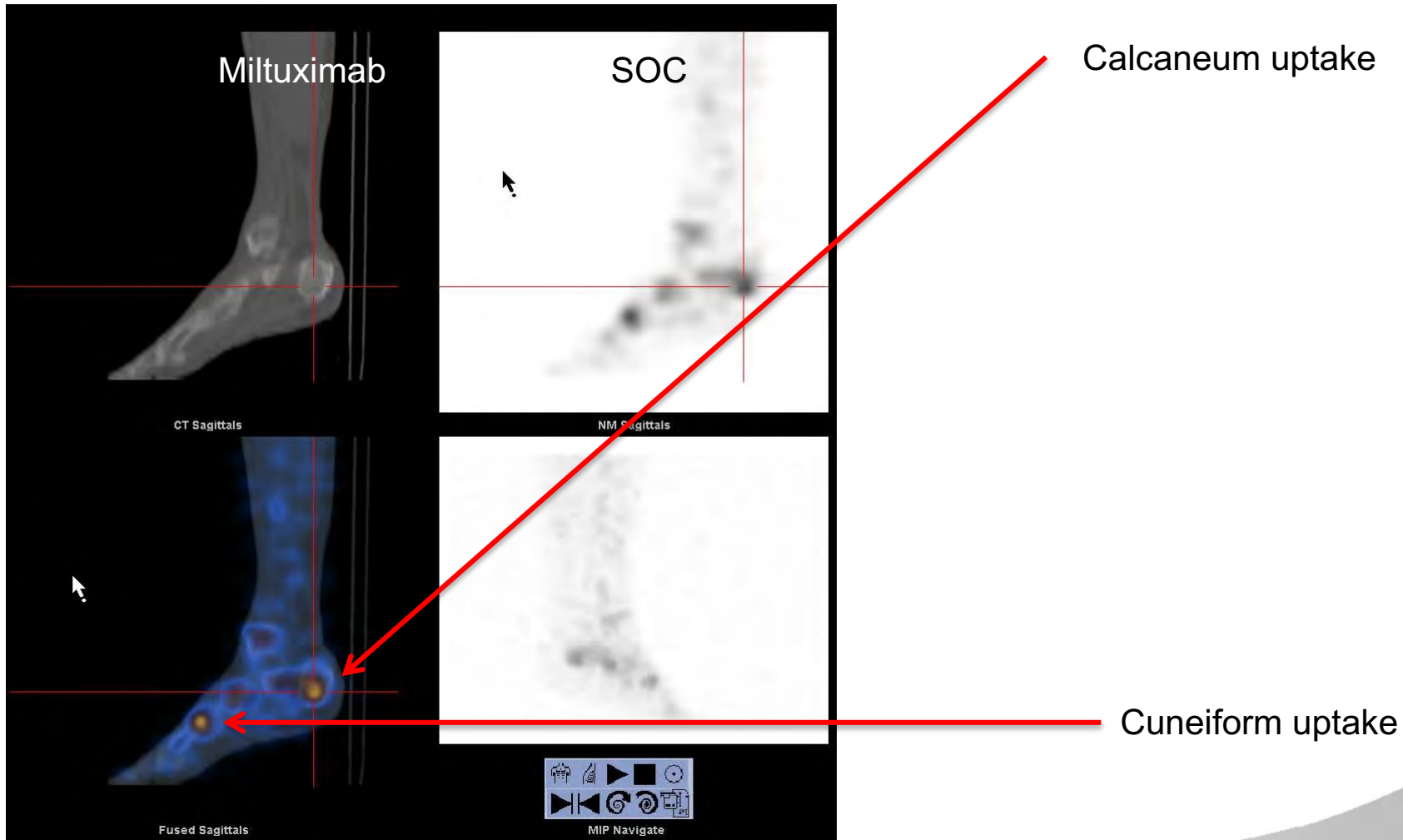


# Miltuximab<sup>®</sup> and MIL-38 anti-Glypican 1 monoclonals

- **Antigen:** Recognises Glypican-1 cell surface heparan sulfate proteoglycan
- **Epitope:** conformational epitope on the protein component of GPC-1
- **Chimeric** and **humanized** versions available
- **Clinical indications:** prostate, pancreatic, bladder, esophageal, brain, ovarian, breast cancers
- **Mechanism(s) of action:** radio-immunotherapy, antibody drug conjugate, MIL-38 – CD3 bi-specific
- **Antibody Affinity:**  $1 \times 10^{-9}$  (Octet) for human GPC-1,  $1 \times 10^{-8}$  (Octet) for cyno or rhesus GPC-1
- **Clinical trial:** 10 patients safely dosed in First In Human Phase 1 trial



# Prostate Cancer Patient #2 Images at 24 hours



## Addressable Indications

Cancer	New cases diagnosed in 2012	Percent of all cancers (excl. non-melanoma skin cancers)	Mortality Rate
<b>Prostate</b>	1,094,916	15	307,481
<b>Esophagus</b>	323,008	4	281,217
<b>Bladder</b>	330,380	5	123,051
<b>Pancreas</b>	178,161	2	173,827
<b>Brain, nervous system</b>	139,608	2	106,376
<b>Ovary</b>	238,719	3	151,917
<b>Total</b>	2,831,000	31	1,143,869

Source: <http://globocan.iarc.fr>

# Focusing the Research Effort for Best Early Stage Data

## Mechanism of Action

- Preclinical xenograft studies of both the Miltuximab<sup>®</sup> ADC and MIL38-CD3 bispecific are currently being completed
- When completed, a comparison to the current radio-immunotherapy preclinical data will be made
- GlyTherix will then select the most effective mechanism of action to take forward in our initial program
- This decision will also take into account the 'manufacturability' of the selected mechanism of action

## Antibody Engineering

- Miltuximab<sup>®</sup> will be converted to a humanized antibody for future on-going trials

## First Indication to Study

- GlyTherix is 75% of the way through its First-in-Human trial and has dosed (to date) prostate, bladder and pancreatic cancer patients
- Prostate cancer is the first indication that will be studied in the initial Phase 1 trial

**An immediate investment will enable GlyTherix to initiate commercial development of Miltuximab<sup>®</sup> for the prioritized indication, prostate cancer**



# An Expanding Patent Estate

## Robust, multilayered IP claims

Patent Family	Stage of Development
1. Cell Surface Prostate Cancer Antigen for Diagnosis	National Phase process continuing: AU, CN, CA, EU, JP, KR, SG and US
2. Monoclonal ANTI-GPC-1 Antibodies and Uses Thereof	National Phase continuing: AU, CN, CA, EU, JP, KR, SG and US
3. Glypican Epitopes and Uses Thereof	National Phase commenced: AU, CN, CA, EU, JP, KR, SG and US
4. Therapeutic antibodies and Uses Thereof	National Phase commenced: AU, CN, CA, EU, JP, KR, SG and US

- Serial filing of primary and dependent patent claims via PCT track
- Countries to be lodged in include : US, EU, AU, Canada, Japan, China, Singapore and Korea
- IP counsel: Cooley LLP (Washington DC office, US), Spruson & Ferguson (Sydney office AU)
- Related guidance is that company has assembled robust patent portfolio
- Assuming all granted, patent coverage will afford minimum 20 year period (2034/35)





# Use of Funds

External Activities	Stage	Cost (US\$ 000)
Fully human antibody program	GMP batch	4,300
Radio-immunotherapy program	Phase I trial	2,750
ADC program	Phase I trial	3,450
Bispecific and small molecule program	Preclinical	300
Cell based therapy program	Preclinical	500
IP Development and Freedom to Operate	IP	1,500
	<b>Total</b>	<b>12,800</b>
Company Expenditure		
Staff, space, KOLs, administration at \$300K/month over 2 yrs		<b>7,200</b>
	<b>Grand Total</b>	<b>20,000</b>

## QR Link to GlyTherix IM

- Please point your QR reader to the icon to download the IM or go to:  
<https://goo.gl/MHGdVk>

